

ECOFLOORING

Super Vinyl Plank



3
mm

WOOD SERIES

Wear Layer 0.2 mm
Thickness 3.0 mm

Size 152.4 mm x 914.4 mm
24 pieces/box 3.34 sqm

GLUE DOWN
SYSTEM



EV 3001 Cloudy Oak



EV 3002 Caramel Oak



EV 3003 Tropical Oak



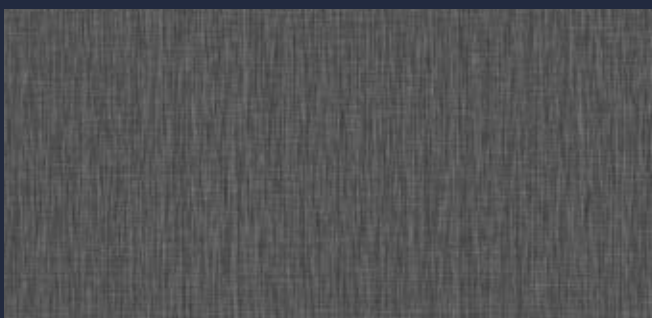
EV 3004 Moonlit Teak

FABRIC SERIES

Wear Layer 0.2 mm
Thickness 3.0 mm

Size 304.8 mm x 609.6 mm
18 pieces/box 3.34 sqm

GLUE DOWN
SYSTEM



EV 3009 Shadow Linen



EV 3010 Misty Linen

WOOD SERIES

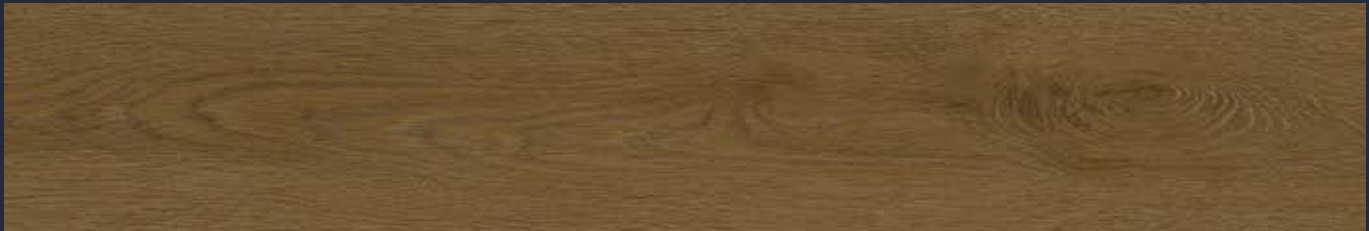
Wear Layer **0.2 mm**
Thickness **3.0 mm**

Size **152.4 mm x 914.4 mm**
24 pieces/box **3.34 sqm**

**GLUE DOWN
SYSTEM**



EV 3005 Ruby Oak



EV 3006 Cocoa Teak



EV 3007 Chocolate Oak



EV 3008 Phantom Oak

STONE SERIES

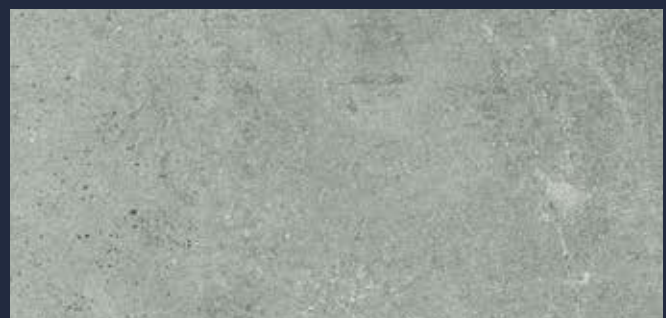
Wear Layer **0.2 mm**
Thickness **3.0 mm**

Size **304.8 mm x 609.6 mm**
18 pieces/box **3.34 sqm**

**GLUE DOWN
SYSTEM**



EV 3011 Natural Cement



EV 3012 Washed Cement

Technical Data

CHARACTERISTICS	TEST METHOD	PASS
Wear Resistance	EN 660, EN 649	Fv=1.15m ³ /100 revolutions, T group
IIC	ASTM E492-09	✓
Impact Resistance (Big Ball)	EN 13329	≥1800 mm
Castor Chair resistance	EN 4918	✓
Effect of Furniture (type 0)	ISO 16581	✓
Locking Strength	ISO 24334	≥1.5kn/m
Resistance to Staing	EN 438	✓
Residual Indentation After Static Load	EN 24343	Mean value 0.03 mm
VOC Emission	CDPH/EHLB Standard Method v1.2-2017	≤0.5 mg/m ³
Dynamic Coefficient of Friction	EN 13893	≥0.3
Color Fastness to Light	ISO105B02	≥6
Reaction to Fire	EN 13501	✓
Phthalates Test	EN 14372	✓
Slip Resistance	DIN51130	✓
RoHS Directive 2011/65/EU	IEC62321	✓
Formaldehyde	EN 717	< LOD (216 h)
Sliding Behavior BP & EIR Surface	EN 13893	BP: U= 0,39 EIR: U= 0,41
Staining & Resistance to Chemical	EN ISO 26987	✓



COCOK UNTUK AREA SEMI-KOMERSIAL



TAMPILAN MOTIF NATURAL



KUAT, NYAMAN & MUDAH DIRAWAT



INSTALASI LEM PRAKTIS



ANTI RAYAP


rumahtaco.id
 0812-9978-7735

Scan to contact us
on WhatsApp

